



McDonald Square Accessibility Plan

Public Informational Meeting

Endicott Estate

September 5, 2017



Overview

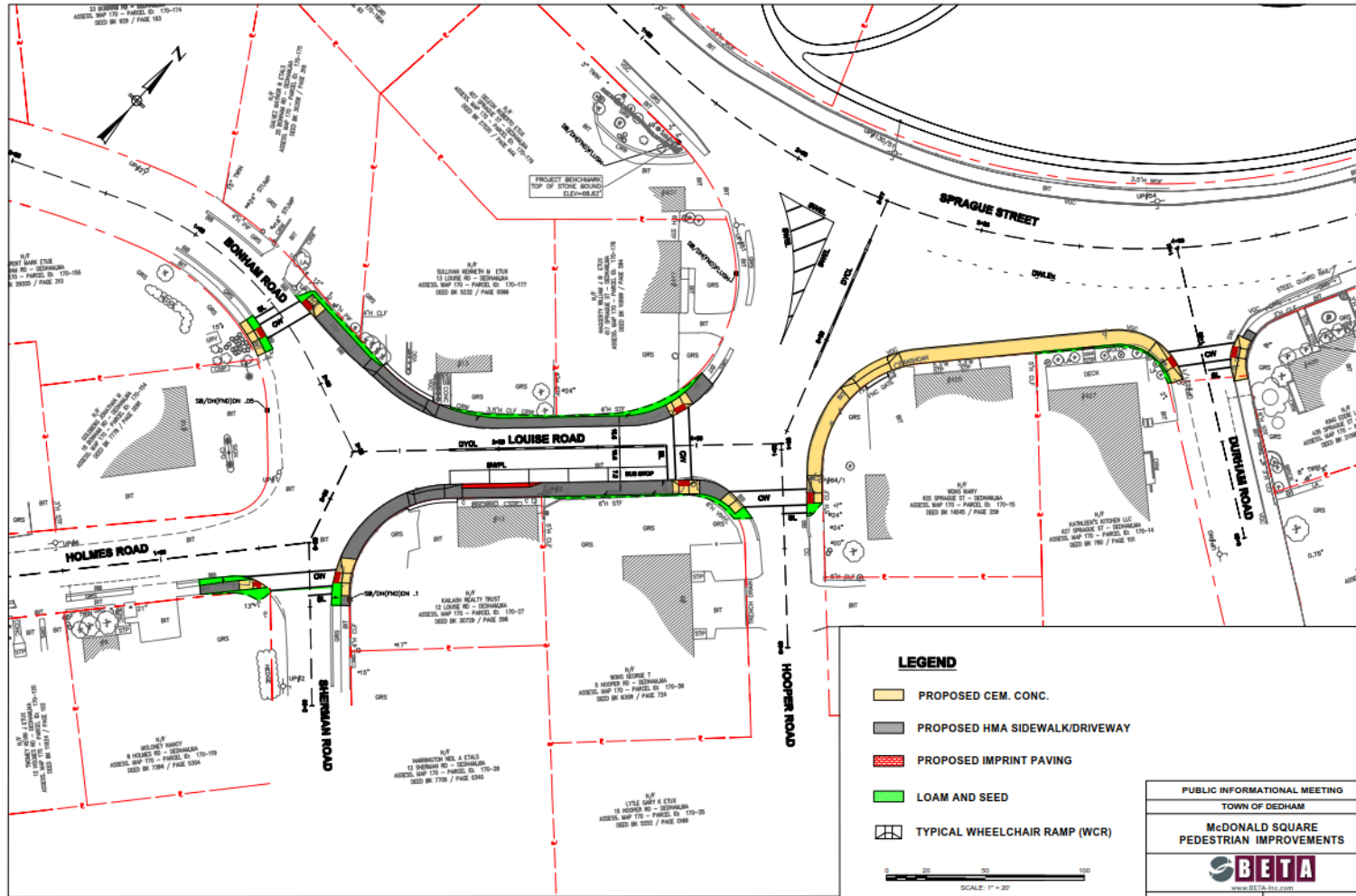
McDonald Square Pedestrian Improvements


- Public meeting held here with the Manor Neighborhood Association on February 15, 2017
- Residents given the opportunity to ask questions and voice opinions. Study advanced to design phase with construction anticipated next spring
- Differences between presented concept and current design
 - Automotive Garage Parcel is removed upon owner input
 - Rectangular Rapid Flashing Beacon (RRFB) location shifted towards proposed athletic fields
 - Bump-out removed from the northeast corner of Sprague St/Durham Rd intersection

Study Area

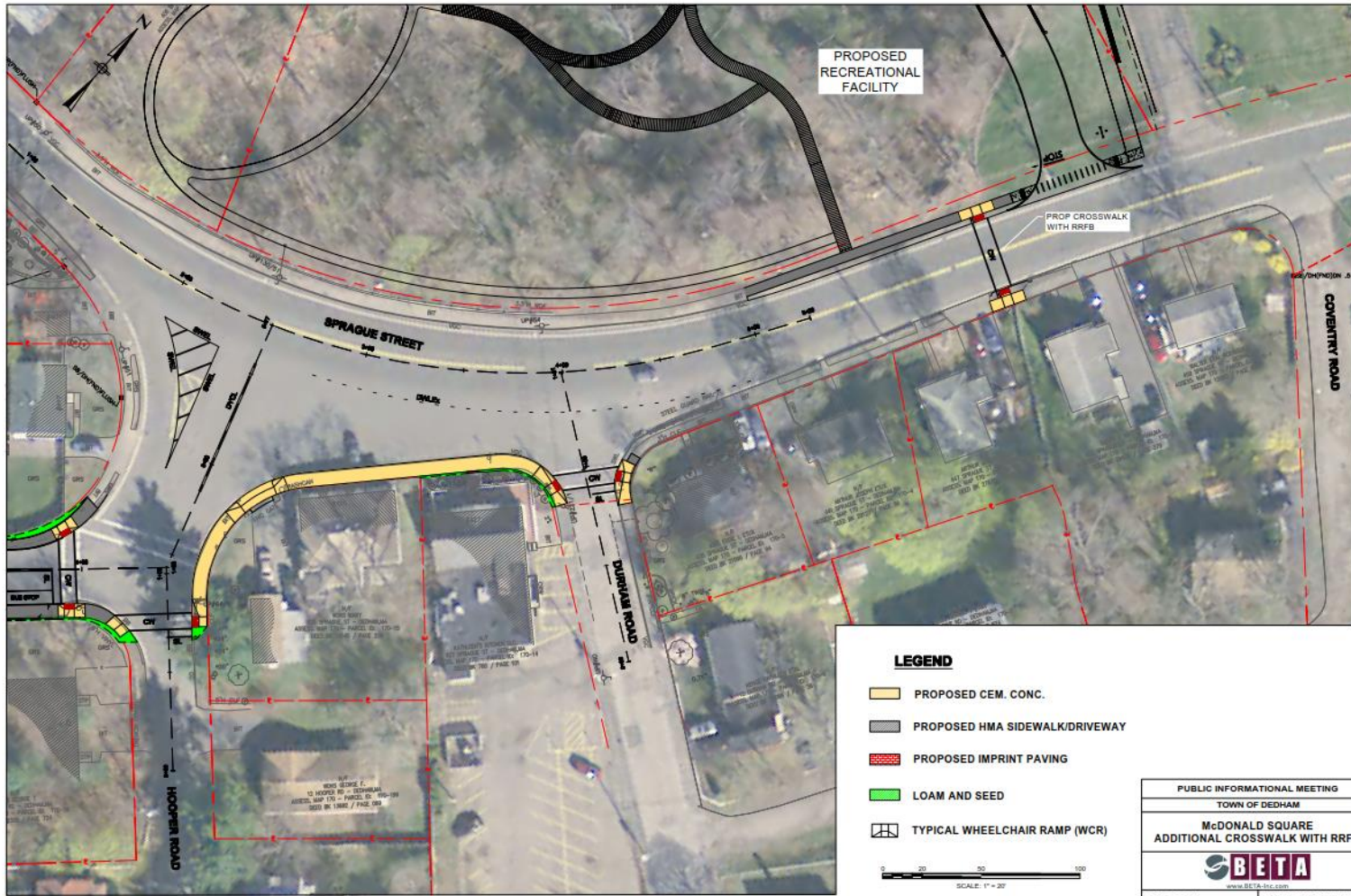


McDonald Square Design



PUBLIC INFORMATIONAL MEETING	
TOWN OF DEDHAM	
McDONALD SQUARE PEDESTRIAN IMPROVEMENTS	
 www.BETA-tv.com	
DATE: 9/5/2017	PROJECT FILE NO: 5613

Proposed Crosswalk Design



LEGEND

- PROPOSED CEM. CONC.
- PROPOSED HMA SIDEWALK/DRIVEWAY
- PROPOSED IMPRINT PAVING
- LOAM AND SEED
- TYPICAL WHEELCHAIR RAMP (WCR)

SCALE: 1" = 20'

PUBLIC INFORMATIONAL MEETING	
TOWN OF DEDHAM	
McDONALD SQUARE ADDITIONAL CROSSWALK WITH RRFB	
www.BETA-1st.com	
DATE: 9/9/2017	PROJECT FILE NO: 5613

RRFB Location

- RRFB (Rectangular Rapid Flashing Beacon)



RRFB Location

- 447/453 Sprague Street



RRFB Location

- Sight Distance



Looking eastbound



Looking westbound

Questions/Comments?