

Dedham Town Green

An aerial photograph of a town, likely in the Northeastern United States, showing a mix of residential and commercial buildings, a major highway with a bridge, and a soccer field in the foreground. The image is semi-transparent, serving as a background for the text.

Context

Scale Comparisons

Opportunities and Constraints

Design

Discussion

Context

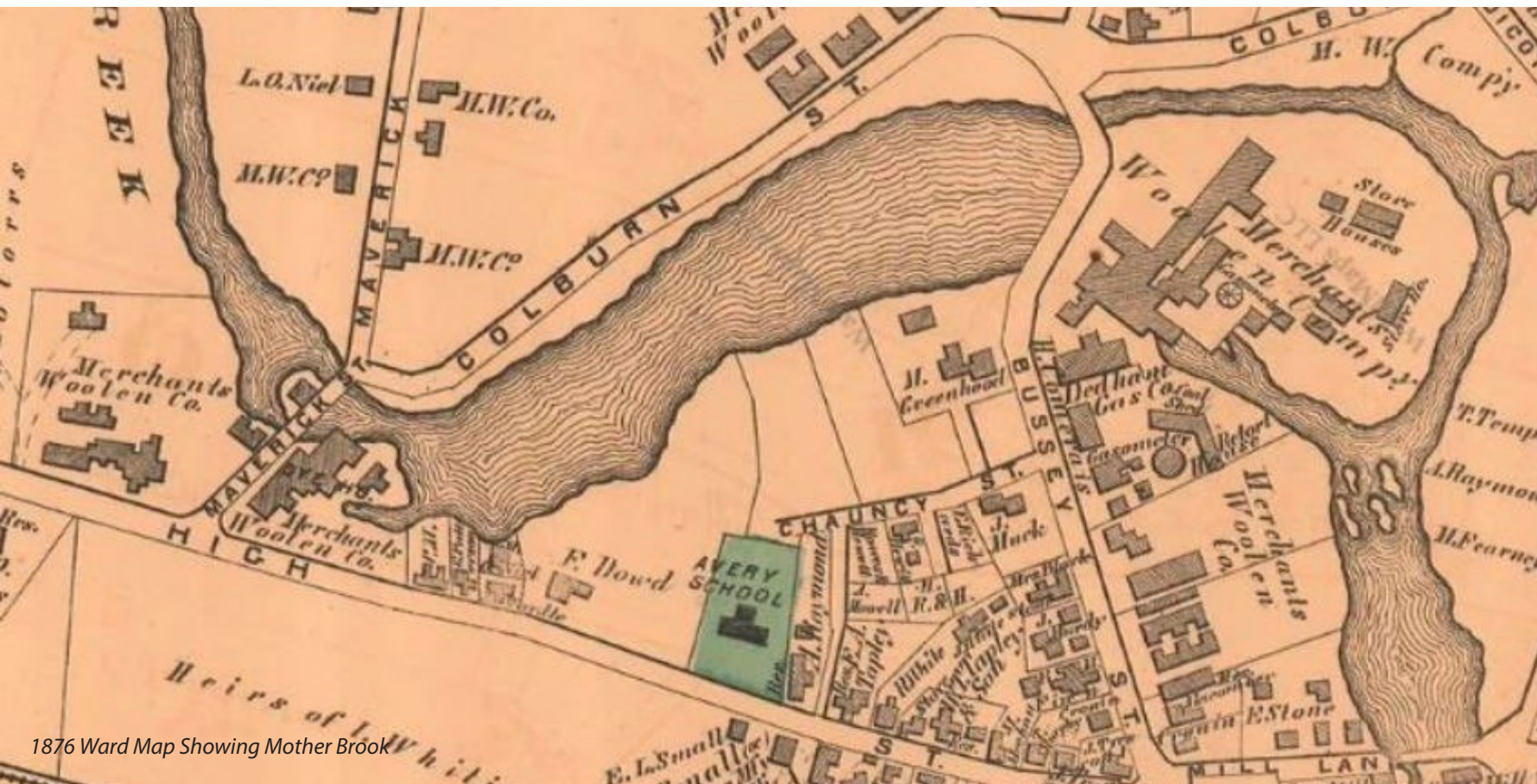
HISTORIC/INDUSTRIAL CHARACTER

- Mother Brook - First Canal in US
- Town established on mill work
- 47 Sons of Dedham - Civil War
- Memorial Hall



Dam & Woolen Mill, East Dedham, Mass.

Historic Postcard from the Dedham Historical Society & Museum Collection



Memorial Hall, Dedham, Mass.

Context

HISTORIC/INDUSTRIAL CHARACTER

- Industrial character celebrates Dedham history and aligns well with brick architecture
- Address Verizon facade



Context

ACTIVATE THE TOWN CENTER

- Support local businesses
- Increase foot traffic
- Foster community involvement
- Create job opportunities
- Generate tax revenue









Context

COMMERCIAL CORRIDOR

- Park should respond to context
- Activate the Washington Street Edge
- Residential side to be more passive



Ground Level Use Key

-  Town Green site
-  Retail/Commercial
-  Residential
-  Office/Medical
-  Civic/Institution
-  Municipal Parking Lot

An aerial photograph of a town, likely in the South, showing a mix of residential and commercial buildings, a major highway with a bridge, and a soccer field in the foreground. The text is overlaid on the image.

Context

Scale Comparisons

Opportunities and Constraints

Design

Discussion

SCALE COMPARISONS

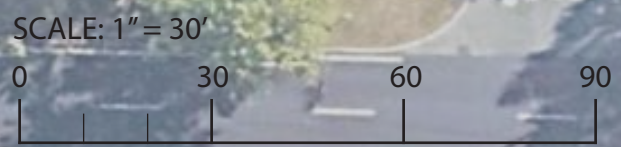
POST OFFICE SQUARE - BOSTON, MA



SCALE: 1" = 30'
0 30 60 90

SCALE COMPARISONS

RIVERSIDE PARK - CAMBRIDGE, MA



SCALE COMPARISONS

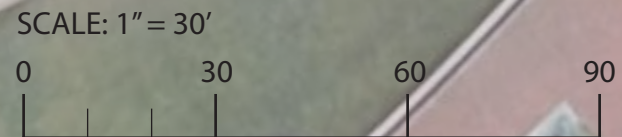
3RD AVE PARK - BURLINGTON, MA



SCALE: 1" = 30'
0 30 60 90

SCALE COMPARISONS

ATLANTIC WHARF - BOSTON, MA



An aerial photograph of a town, likely in the South, showing a mix of residential and commercial buildings, streets, and green spaces. The image is semi-transparent, allowing text to be overlaid. The text is arranged vertically in the center of the image. The word 'Context' is at the top, followed by 'Scale Comparisons', then 'Opportunities and Constraints' in a larger, bold, orange font, then 'Design', and finally 'Discussion' at the bottom.

Context

Scale Comparisons

Opportunities and Constraints

Design

Discussion

OPPORTUNITIES AND CONSTRAINTS

GATEWAYS



SCALE: 1" = 30'
0 30 60 90

OPPORTUNITIES AND CONSTRAINTS

BUFFERING - VISUAL AND AUDITORY



SCALE: 1" = 30'
0 30 60 90

OPPORTUNITIES AND CONSTRAINTS

ENCLOSURE - SAFETY



OPPORTUNITIES AND CONSTRAINTS

VIEWSHEDS



SCALE: 1" = 30'
0 30 60 90

OPPORTUNITIES AND CONSTRAINTS

IDEAL PERFORMANCE SPEAKER ORIENTATION



SCALE: 1" = 30'
0 30 60 90

OPPORTUNITIES AND CONSTRAINTS

CREATE AN INWARD FOCUS



SCALE: 1" = 30'
0 30 60 90

OPPORTUNITIES AND CONSTRAINTS

ACTIVE URBAN RETAIL EDGE



OPPORTUNITIES AND CONSTRAINTS

LEGEND



GATEWAY



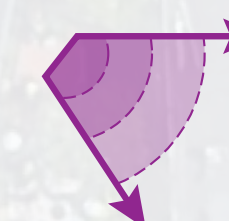
BUFFERING - VISUAL AND AUDITORY



ENCLOSURE - SAFETY



VIEWSHED



IDEAL PERFORMANCE ORIENTATION



INWARD FOCUS



ACTIVE URBAN RETAIL EDGE



An aerial photograph of a town, likely in the South, showing a mix of residential and commercial buildings, streets, and green spaces. The image is semi-transparent, allowing the text to be clearly visible. The text is arranged vertically in the center of the image. The word 'Design' is highlighted in orange, while the other words are in black.

Context

Scale Comparisons

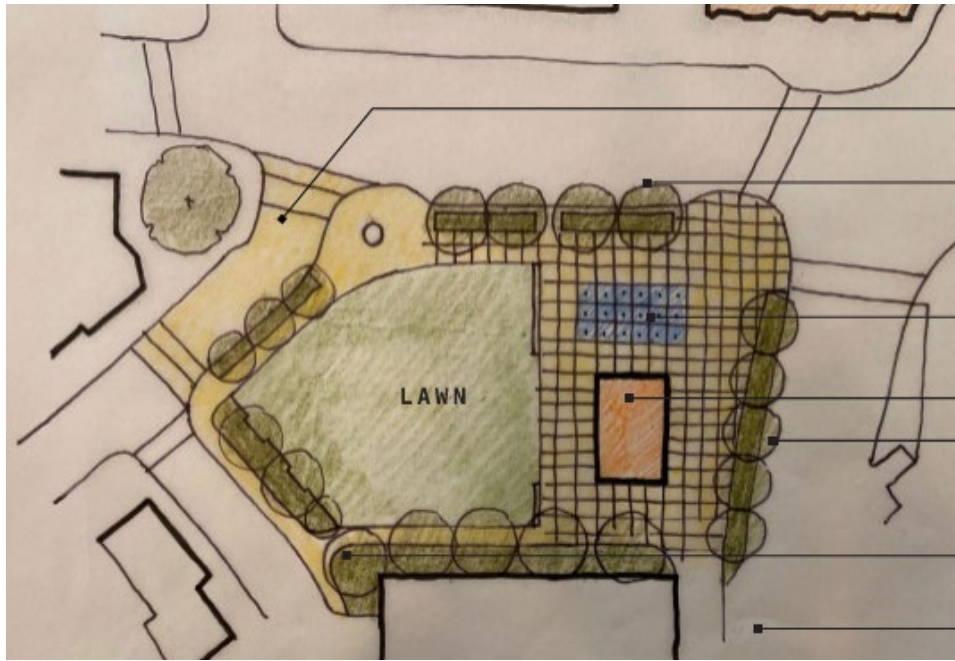
Opportunities and Constraints

Design

Discussion

DESIGN

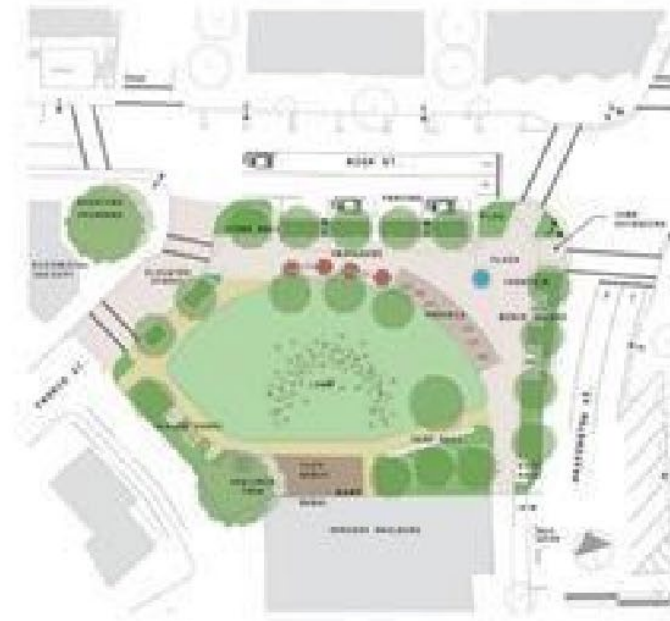
DESIGN STUDIES TO DATE



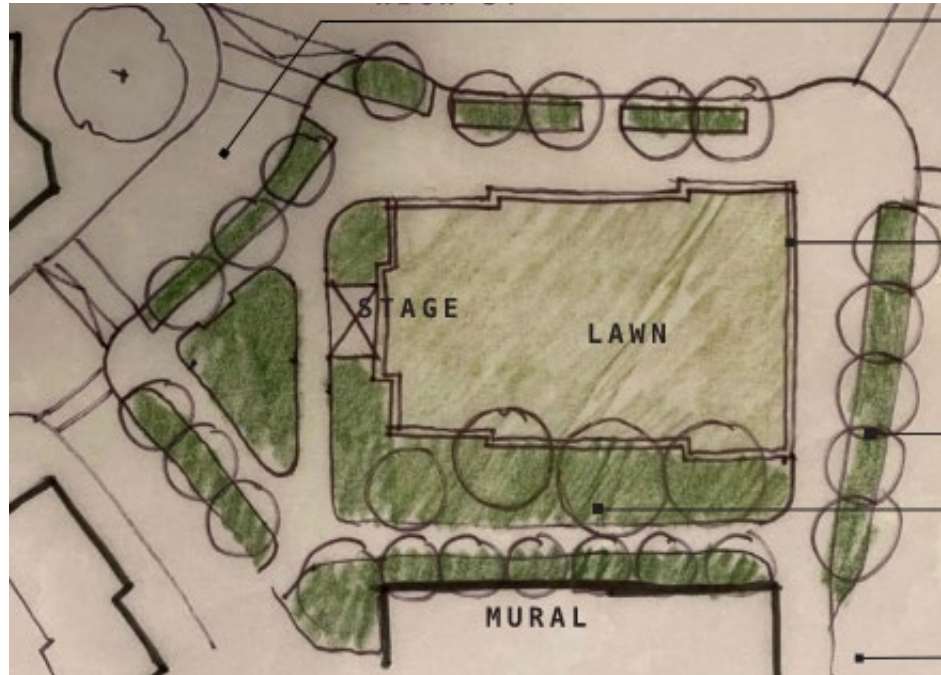
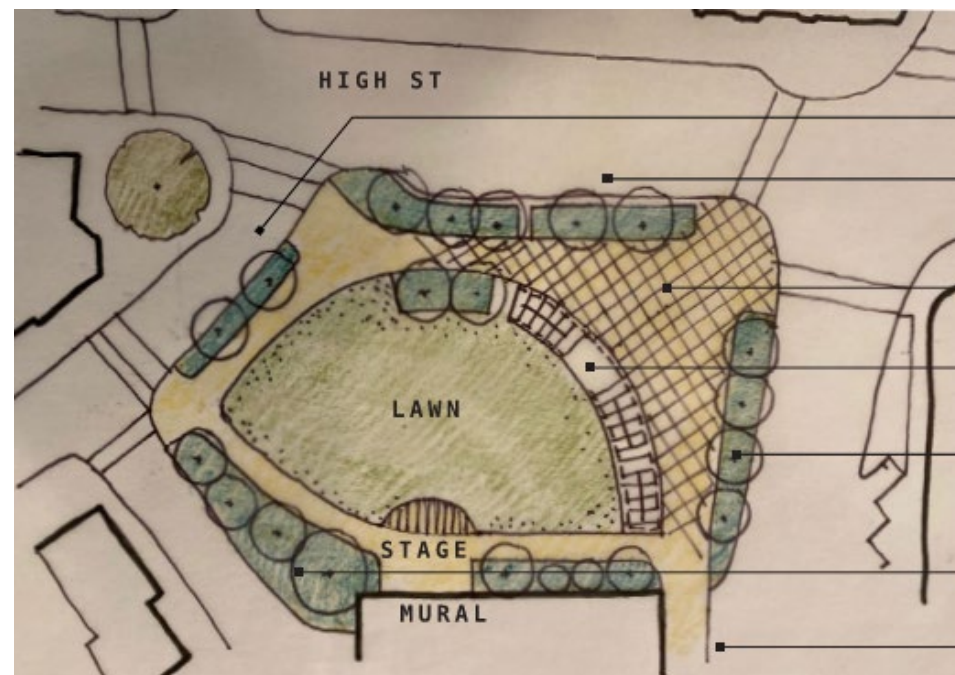
CONCEPT A
THE COMMUNITY PORCH



CONCEPT B
THE CRESCENT



CONCEPT C
THE SQUARE



DESIGN

COMMUNITY ENGAGEMENT PRIORITIES

- Creative Solution for Verizon Facade
- Flexible Space
- Four Seasons
- Multi-generational
- Mitigate Noise
- Clear Edges / Buffering
- Programming
- Celebrate History
- Commercial Activation (but don't compete)

OTHER POTENTIAL ELEMENTS

- Outdoor Dining / Seating Areas
- Community Porch
- Additional Shade Structures
- Stage - Permanent or Temporary
- Swings - Benches not Playground
- Community Bulletin Board
- Drinking Fountain - Bottle Fill
- Bike Racks
- Historical Exhibits
- Solar

PRIORITIZE

SIMPLIFY / UNIFY

HOLISTIC VISION

ADAPTIVE TO PHASING

DESIGN

PRECEDENT IMAGES - GATHERING



DESIGN

PRECEDENT IMAGES - WHIMSY / HISTORY



DESIGN

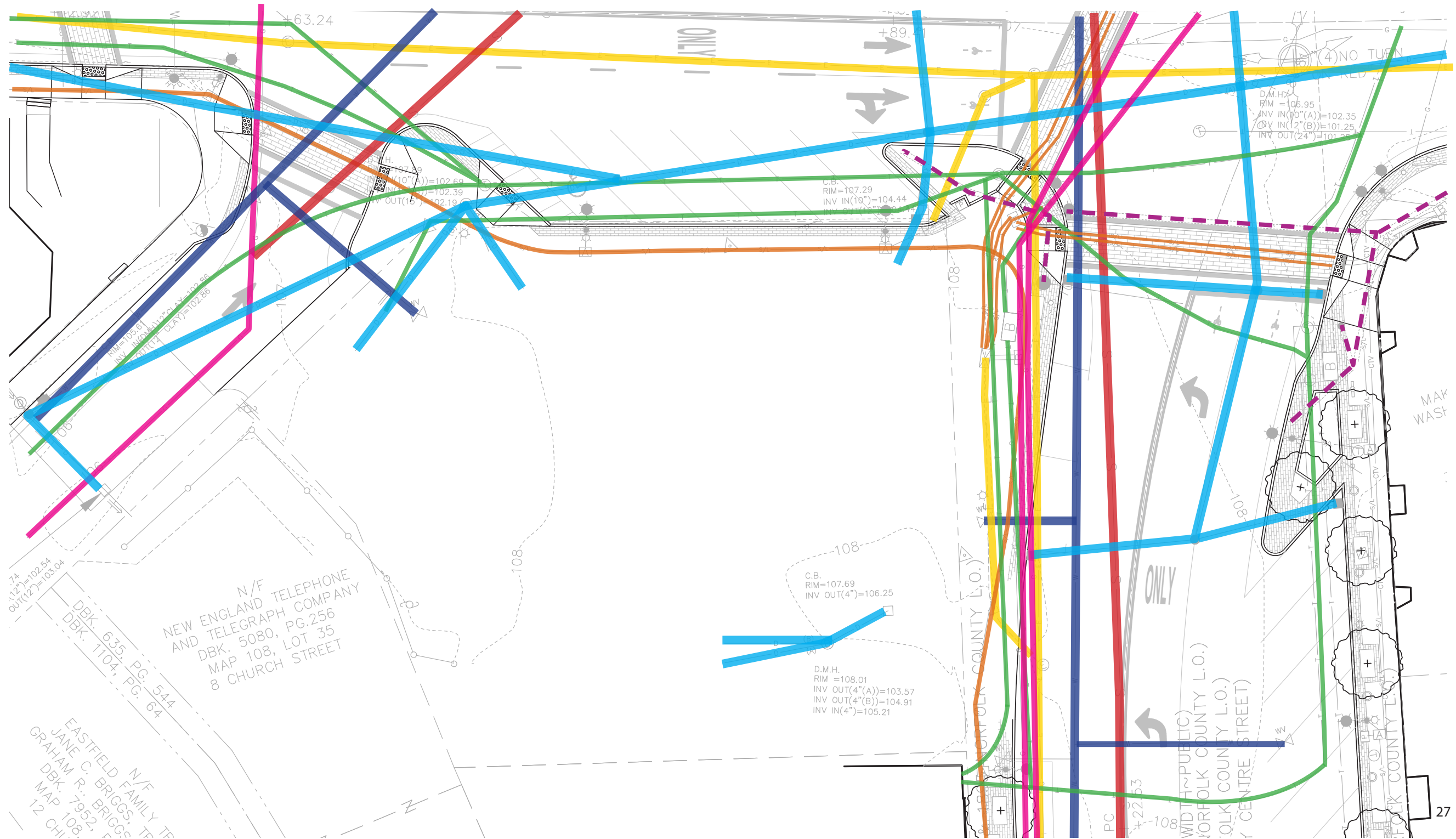
PRECEDENT IMAGES - GREEN INFRASTRUCTURE



DESIGN

SITE UTILITIES

- Electric
- Site Lighting
- Telecom
- Gas
- Water
- Stormwater
- Sewer
- Signal Conduit



DESIGN

BUS STOP

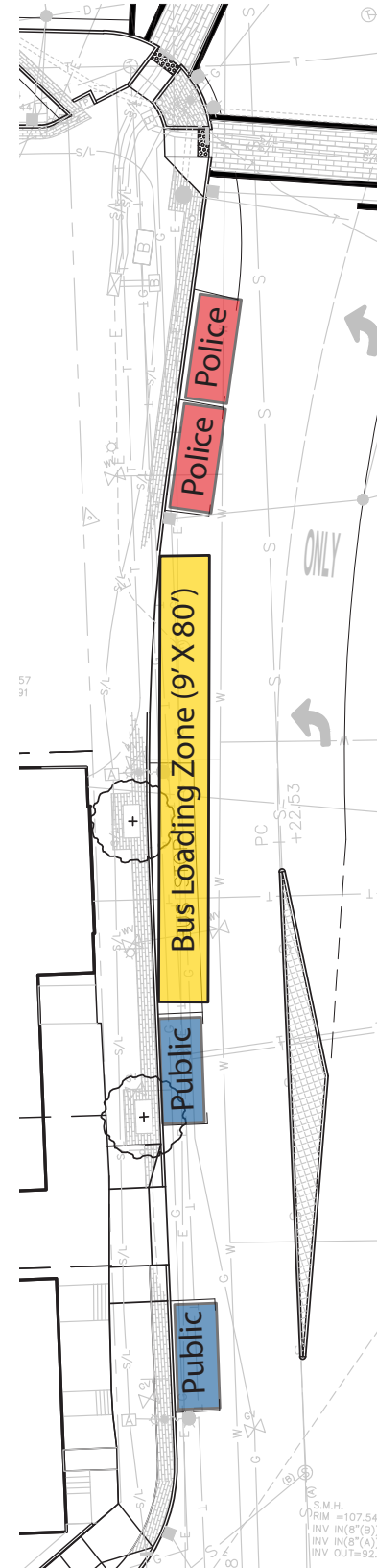
Parking Summary

	Existing	Opt. 1	Opt. 2	Opt. 3
Public Parking Spaces	2	4	2	1
Police Parking Spaces*	2	-	-	-
Public Parking Net Change From Existing	-	+2	0	-1

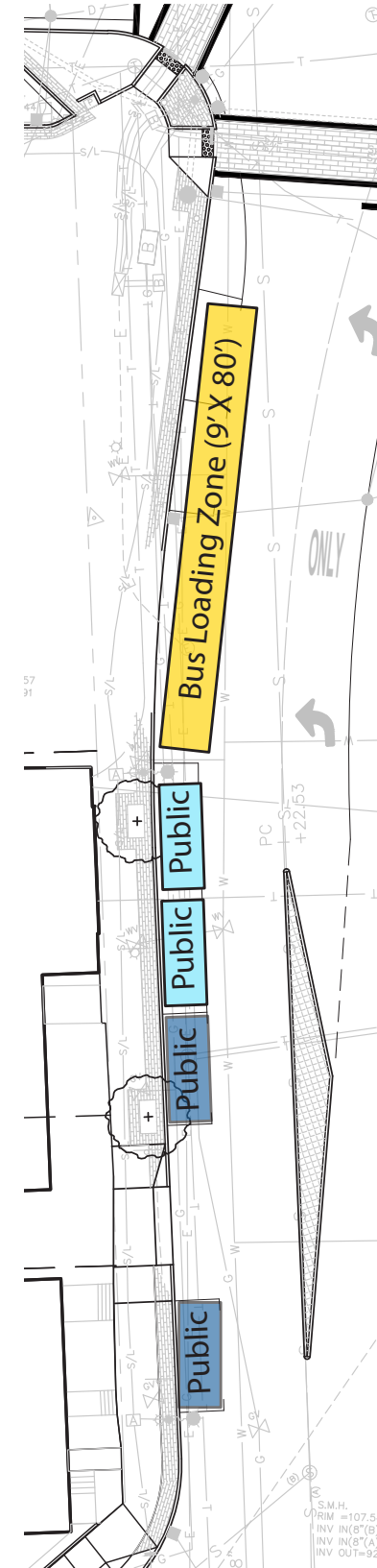
* Option 2 converts existing police parking to public spaces and relocates spaces to existing bus stop

Diagram Legend

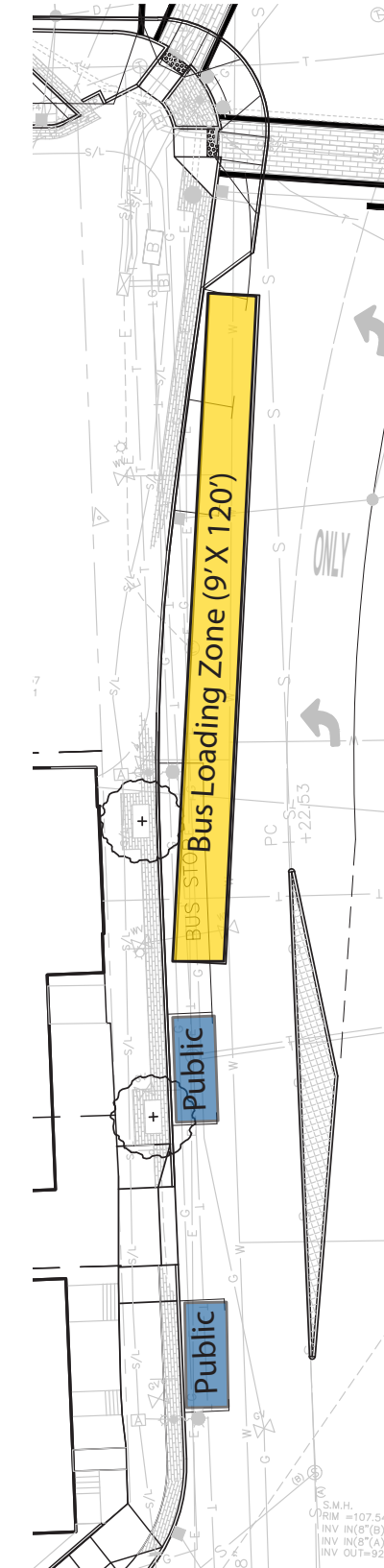
- Public Parking Spaces
- Police Parking Spaces
- Green Buffer Zone
- Bus Stop
- Police Parking Spaces Converted to Public Parking Spaces
- Proposed Tree



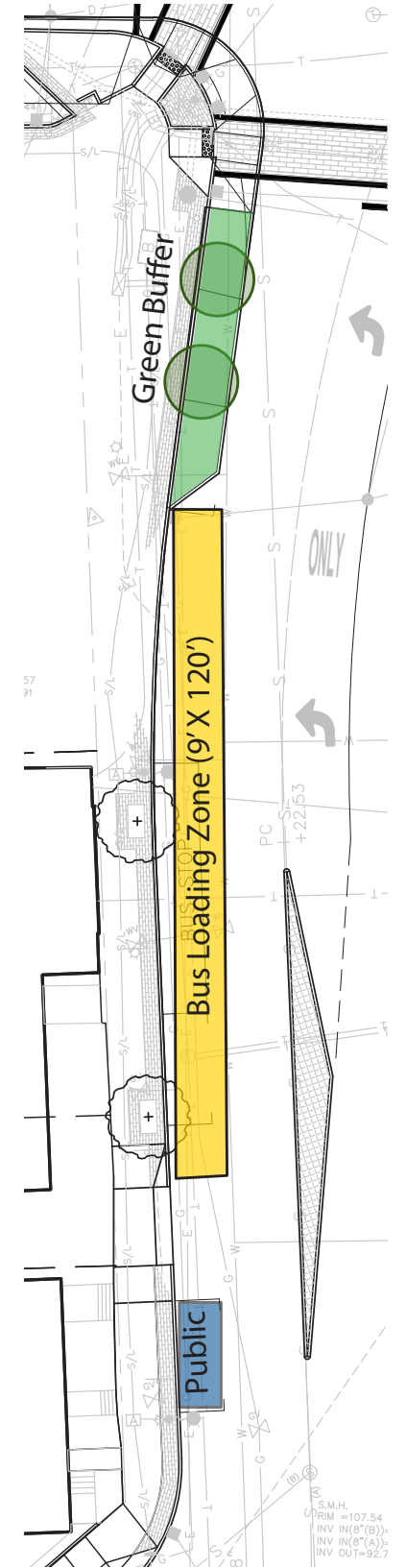
Bus Stop Existing Condition



Bus Stop Option 1



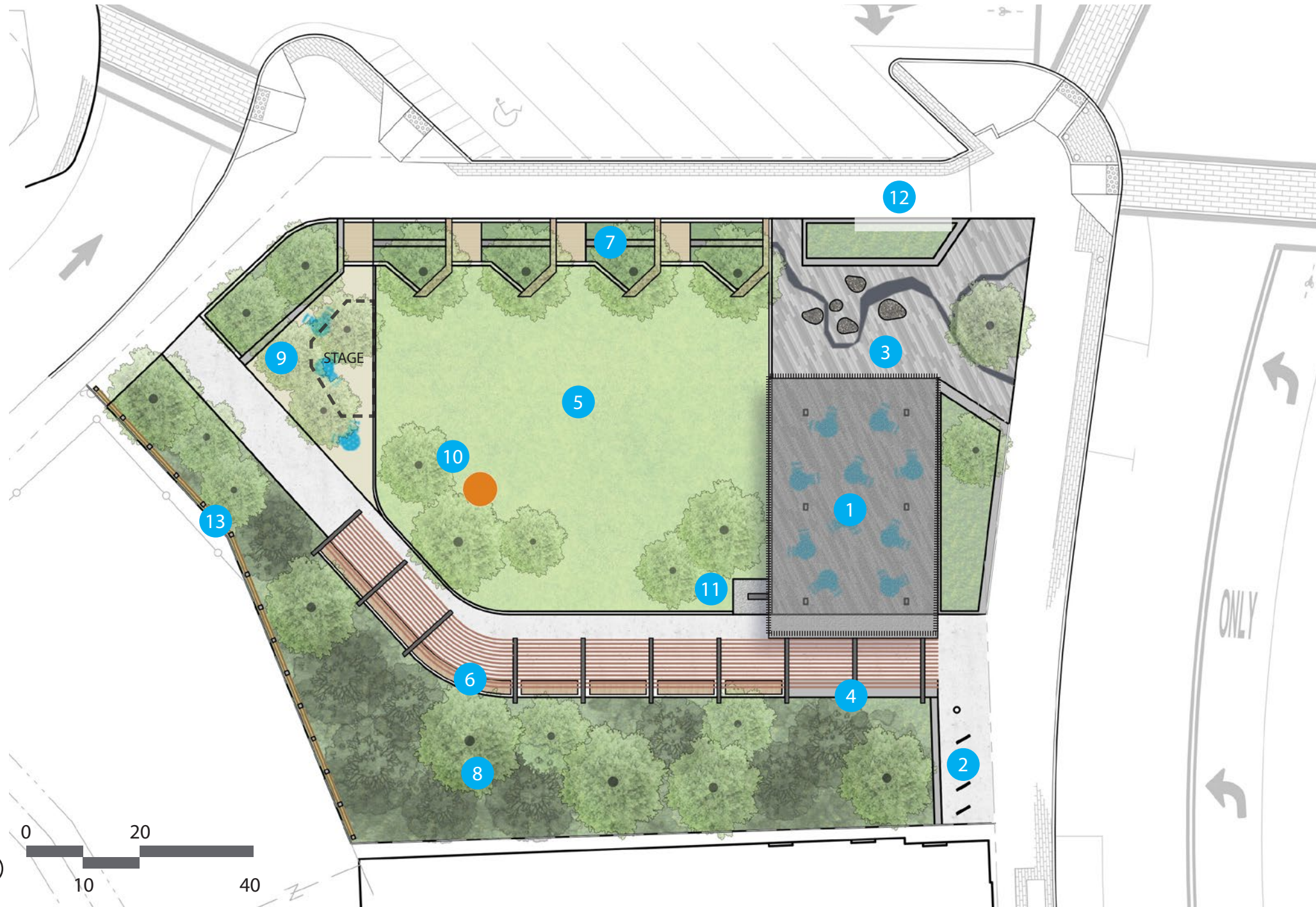
Bus Stop Option 2



Bus Stop Option 3

DESIGN

THE COMMUNITY PORCH - TAKE 2

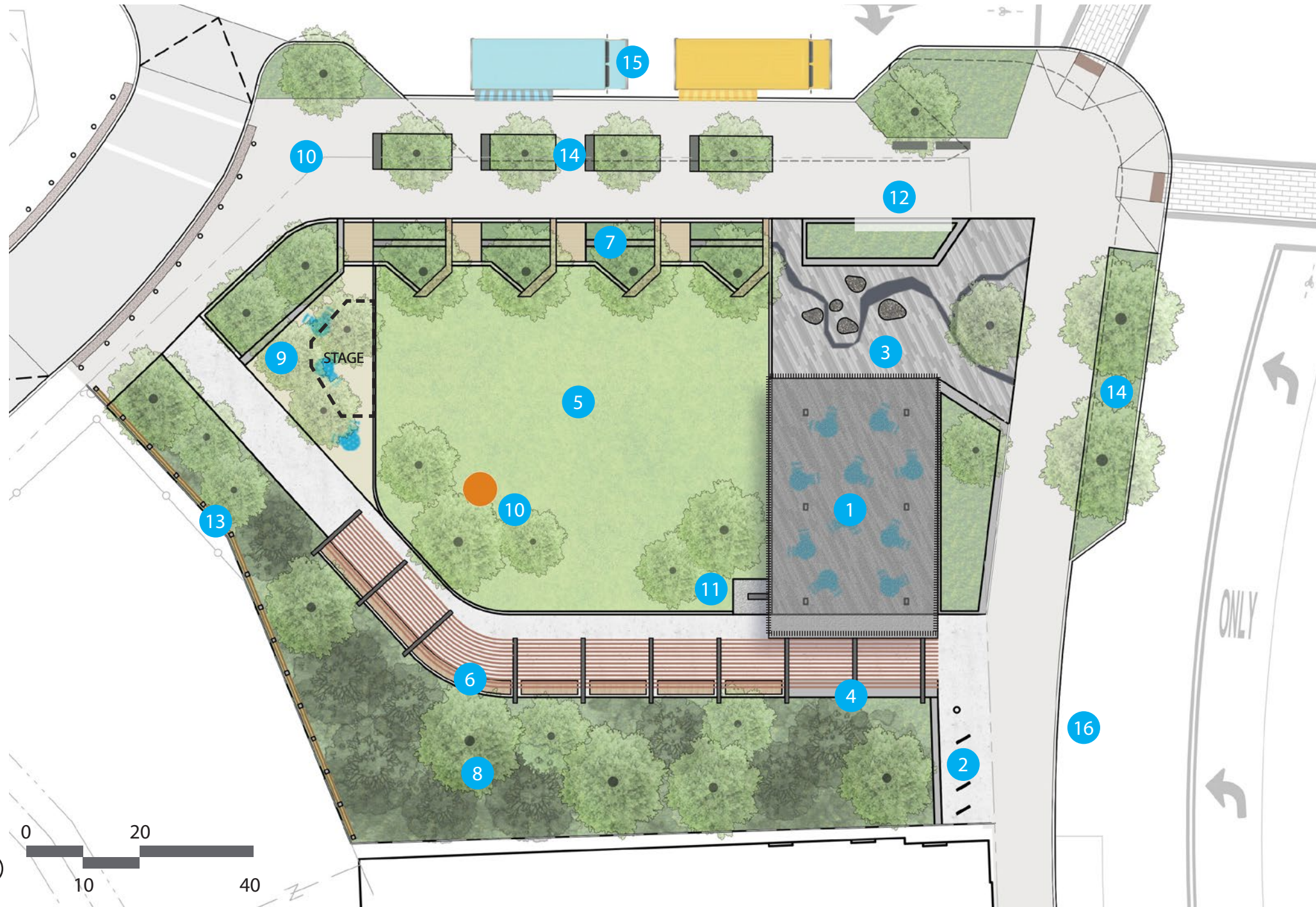


- 1 Covered Community Porch
- 2 Bike Racks and Bottle Fill Station
- 3 Interpretive Seating Element
- 4 Community Bulletin Board
- 5 Lawn
- 6 Curved Bench and Swings Under Pergola
- 7 Rain Gardens
- 8 Planted Buffer - "Urban Wild"
- 9 Stone Dust Gathering Space and Temporary Stage Location
- 10 Potential Art Element
- 11 Rain Chain/Stormwater Feature
- 12 Entry Signage
- 13 Wood Screen Wall



DESIGN

THE COMMUNITY PORCH - TAKE 2



- 1 Covered Community Porch
- 2 Bike Racks and Bottle Fill Station
- 3 Interpretive Seating Element
- 4 Community Bulletin Board
- 5 Lawn
- 6 Curved Bench and Swings Under Pergola
- 7 Rain Gardens
- 8 Planted Buffer - "Urban Wild"
- 9 Stone Dust Gathering Space and Temporary Stage Location
- 10 Potential Art Element
- 11 Rain Chain/Stormwater Feature
- 12 Entry Signage
- 13 Wood Screen Wall
- 14 Phase 2 Curb Extension and Extended Green Buffer
- 15 Food Truck and Drop Off Area
- 16 Bus Stop

DESIGN

THE COMMUNITY PORCH - TAKE 2



DESIGN

THE COMMUNITY PORCH - TAKE 2



DESIGN

THE COMMUNITY PORCH - TAKE 2



DESIGN

THE COMMUNITY PORCH - TAKE 2



DESIGN

THE CRESCENT - TAKE 2



- 1 Covered Community Structure
- 2 Bike Racks and Water Bottle Filler
- 3 Tiered Seating
- 4 Historic Interpretive Elements
- 5 Lawn
- 6 Rain Gardens
- 7 Planted Buffer - "Urban Wild"
- 8 Movable Tables and Chairs
- 9 Entry Signage
- 10 Wood Screen Wall

DESIGN

THE CRESCENT - TAKE 2



- 1 Covered Community Structure
- 2 Bike Racks and Water Bottle Filler
- 3 Tiered Seating
- 4 Historic Interpretive Elements
- 5 Lawn
- 6 Rain Gardens
- 7 Planted Buffer - "Urban Wild"
- 8 Movable Tables and Chairs
- 9 Entry Signage
- 10 Wood Screen Wall
- 11 Phase 2 Curb Extension and Extended Green Buffer
- 12 Food Truck and Drop Off Area
- 13 Bus Stop

DESIGN

THE CRESCENT - TAKE 2



DESIGN

THE CRESCENT - TAKE 2



DESIGN

THE CRESCENT - TAKE 2



DESIGN

THE CRESCENT - TAKE 2



DESIGN



The Community Porch - Take 2 (Phase 1 Shown)



The Crescent - Take 2 (Phase 1 Shown)

An aerial photograph of a town, likely in the Northeastern United States, showing a mix of residential and commercial buildings, a major highway with a bridge, and a soccer field in the foreground. The image is semi-transparent, serving as a background for the text.

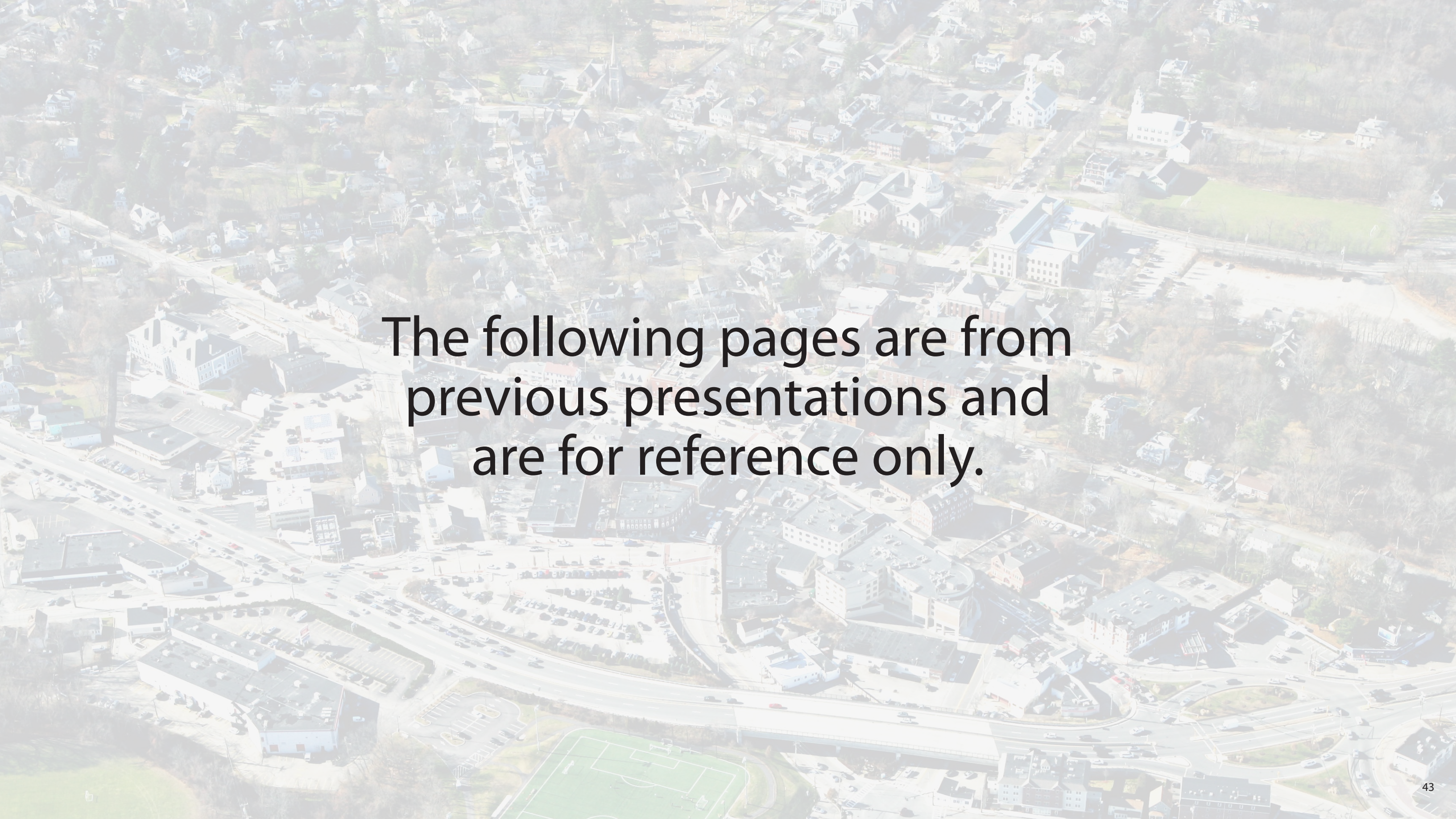
Context

Scale Comparisons

Opportunities and Constraints

Design

Discussion

An aerial photograph of a town, likely in the South, showing a mix of residential and commercial buildings. A major highway with multiple lanes runs through the center, curving to the right. To the left of the highway, there are several large parking lots and commercial buildings. In the foreground, a green soccer field is visible. The overall scene is a dense urban or suburban area with a mix of architecture and green spaces.

The following pages are from
previous presentations and
are for reference only.

Design Goals - Phase 1

COMMUNITY ENGAGEMENT PRIORITIES - SEPTEMBER 2021

Maintenance

Public is interested in knowing who will be responsible for maintaining the park (and how much of this would be done by volunteers / privately). Additional issues included:

- Snow removal plan
- Cross paths on lawn (to avoid damage from cut through)
- Maintenance plan and budget
- Dogs / trash

Favorite elements

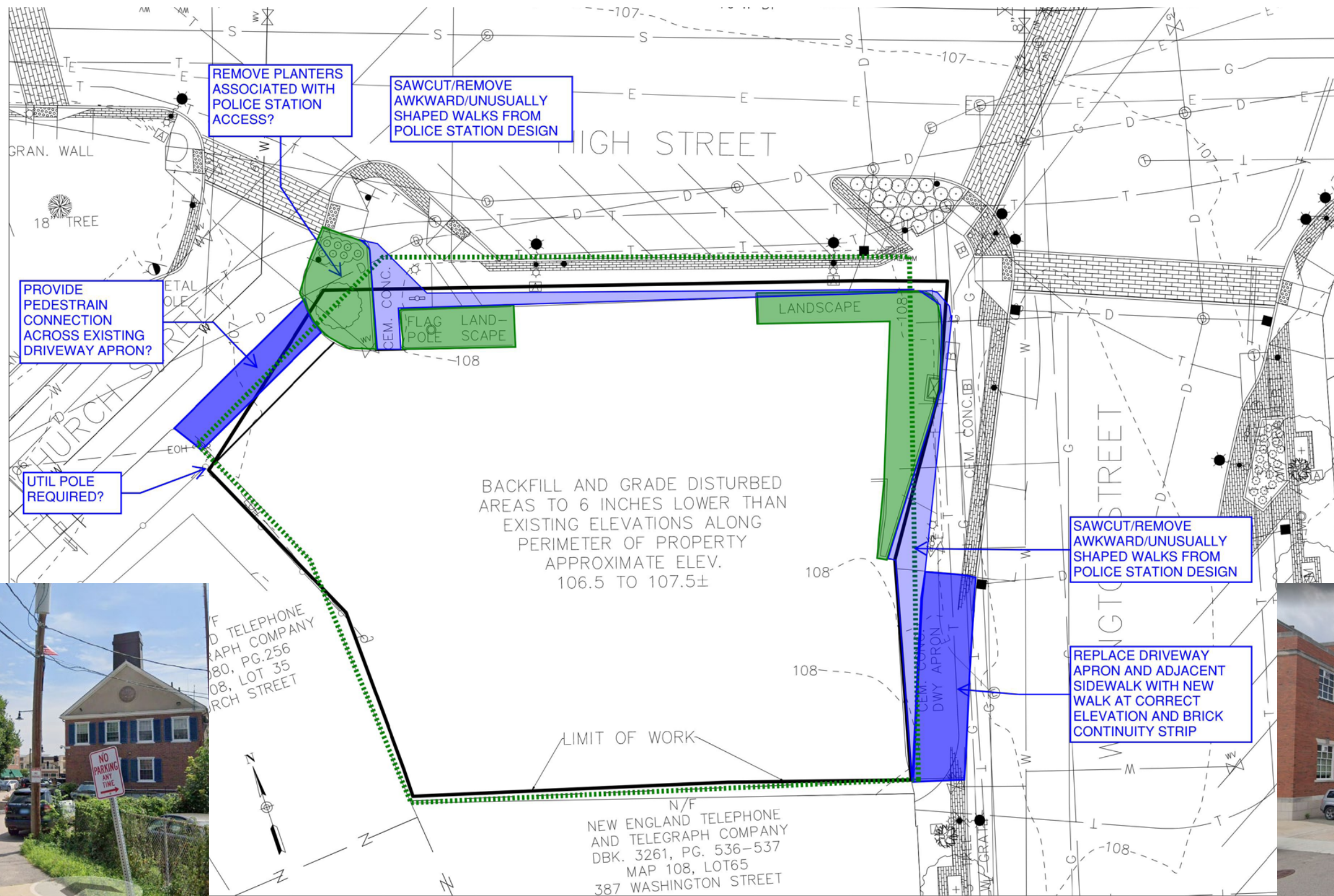
- Flex bench / stage
- Mural
- Swings
- Outdoor dining / seating areas
- Flexible space (lawn, plaza)
- Buffering and green edges
- Tabling of church street (although a few were concerned about closing street)

Additional elements desired

- Pergola on west side with seating (to complement the pavilion)
- Community bulletin board
- Drinking fountain
- Bike rack (need to more clearly depict on plan)
- Historical exhibits / indigenous people (need to depict on plan)
- Solar (could be on roof of pavilion)
- Additional places for kids to climb (boulders, mounds, etc)
- Things for young and older kids to do



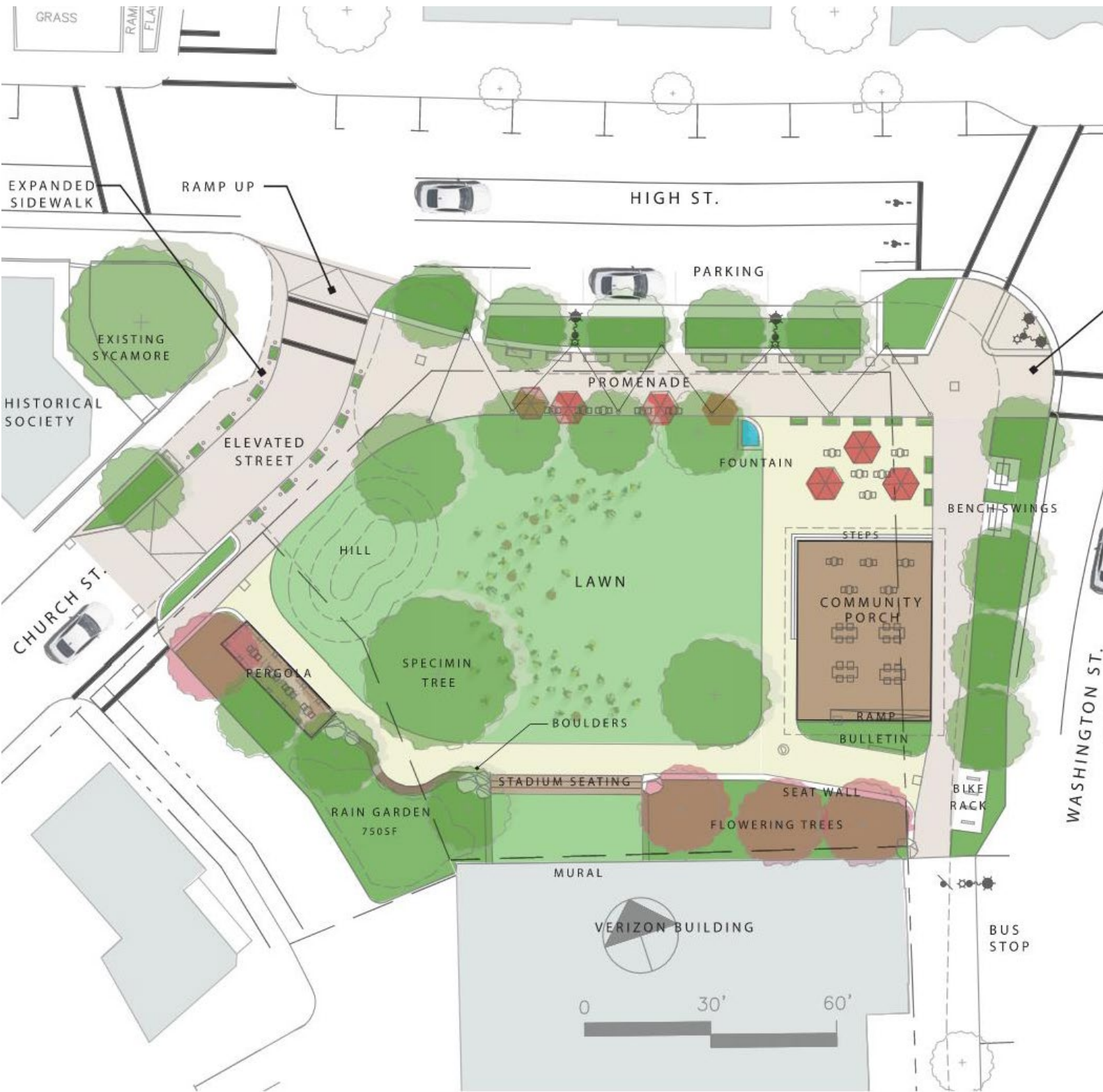
Design Goals - Phase 1 Limit of Work



REGISTERED PROFESSIONAL
SUBCONSULTANT
PROJECT
DEMOLITION OF FORMER POLICE DEPT. FACILITY 600 HIGH STREET
DEDHAM, MA
TITLE
RESTORATION PLAN



Design Goals - Phase 2



An aerial photograph of a town, likely in the Northeastern United States, showing a mix of residential and commercial buildings, parking lots, and a soccer field in the foreground. The image is semi-transparent, serving as a background for the text.

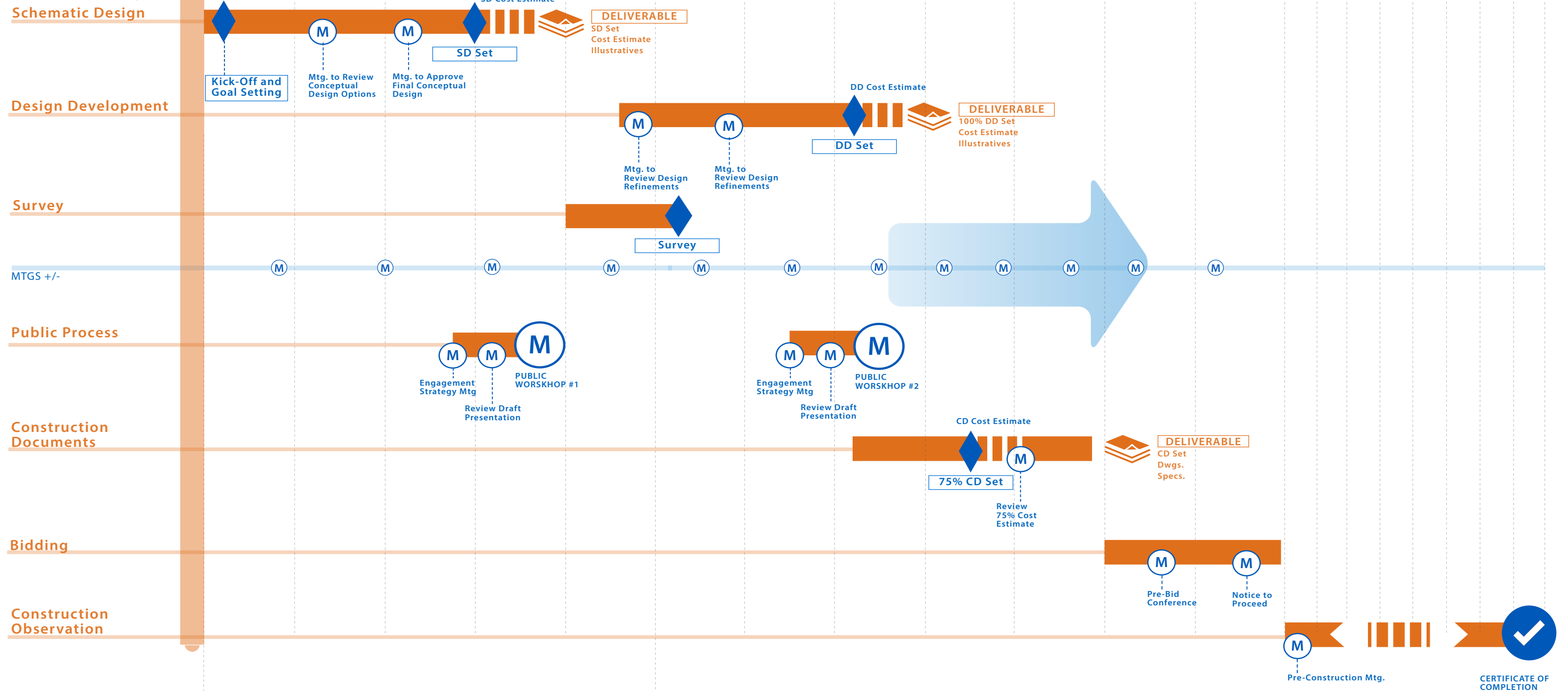
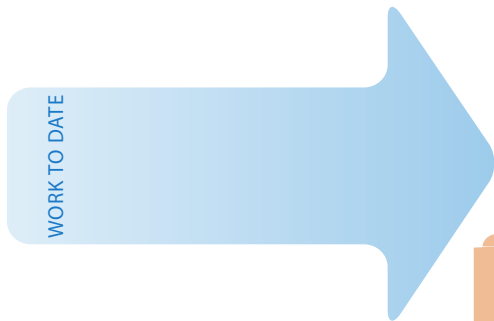
Design Goals

Schedule

Funding Opportunities

Discussion

Schedule



An aerial photograph of a town, likely in the South, showing a mix of residential and commercial buildings, a major highway with a bridge, and a soccer field in the foreground. The text is overlaid on the image.

Design Goals

Schedule

Funding Opportunities

Discussion

Funding Opportunities

	2023												2024												2025											
	Jan	Feb	Mar	Apr	May	June	July	Aug	Sep	Oct	Nov	Dec	Jan	Feb	Mar	Apr	May	June	July	Aug	Sep	Oct	Nov	Dec	Jan	Feb	Mar	Apr	May	June	July	Aug	Sep	Oct	Nov	Dec
Grant Schedules																																				
LWCF Grant Application Submitted	█																																			
LWCF Grant Notification					█																															
LWCF Funding Available											█																									
LWCF Spending Window													█	█	█	█	█	█	█	█	█	█	█	█	█	█	█	█	█	█	█	█	█	█	█	█
PARC Grant Application Submitted (Only if LWCF in unsuccessful)							█																													
PARC Grant Notification										█																										
PARC Grant Funding Available											█																									
PARC Grant Spending Window													█	█	█	█	█	█	█	█	█	█	█	█	█	█	█	█	█	█	█	█	█	█	█	█
One Stop Grant App Submitted (Includes MassWorks & Commonwealth Places Grants)					█																															
One Stop Notifications										█																										
One Stop Grant Funding Available													█	█	█	█	█	█	█	█	█	█	█	█	█	█	█	█	█	█	█	█	█	█	█	█

Project Schedule	Jan	Feb	Mar	Apr	May	June	July	Aug	Sep	Oct	Nov	Dec	Jan	Feb	Mar	Apr	May	June	July	Aug	Sep	Oct	Nov	Dec	Jan	Feb	Mar	Apr	May	June	July	Aug	Sep	Oct	Nov	Dec
Kickoff Meeting		█																																		
Demo of Police Station		█	█	█	█																															
Schematic Design		█	█	█	█																															
Community Meeting					█																															
Survey						█	█																													
Design Development							█	█	█																											
Community Meeting									█																											
Construction Documents										█	█																									
Bidding													█	█																						
Notice to Proceed w/ Construction																																				
Construction																																				

An aerial photograph of a town, likely in the Northeastern United States, showing a mix of residential and commercial buildings, streets, and green spaces. The image is semi-transparent, allowing the text to be clearly visible. The text 'THANK YOU!' is written in a bold, orange, sans-serif font and is underlined with a thin orange line.

THANK YOU!