

Industrial

Stormwater Pollution Prevention Guide

*Protect your business,
your reputation,
and your community.*



From the Neponset River Watershed Association
on behalf of your Department of Public Works
2173 Washington Street
Canton, MA 02021

Non-Profit Org.
U.S. Postage
PAID
Boston, MA
Permit No. 54080



Working Together to Keep Your
Local Waterways Clean
YourCleanWater.org

It's time to take stormwater runoff seriously.

The Environmental Protection Agency is enforcing requirements on municipalities and businesses to reduce polluted stormwater runoff.

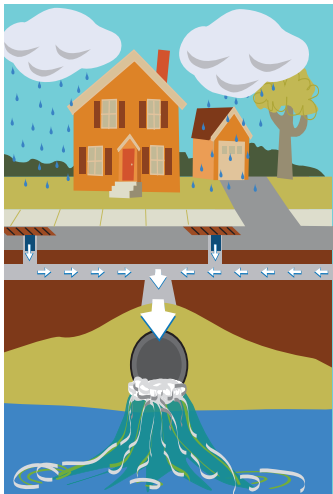
Stormwater runoff is regulated because it can have a significant impact on water quality by contributing pollutants and sediments to creeks, streams, lakes, etc.

Industries need to take steps to reduce or eliminate the polluted stormwater runoff by focusing on:

- general cleaning, both indoors and outdoors;
- maintenance and cleaning of dumpsters and disposal areas;
- materials storage;
- spills;
- use of cleaners and solvents;
- equipment maintenance;
- landscaping and irrigation;
- snow and ice removal.

In addition to statewide rules, you may be required to meet additional local stormwater control regulations.

Check with local government officials to determine if additional local rules apply to your workplace.



Stormwater pollution is a toxic mix of bacteria, chemicals, metals, nutrients and other contaminants that wash off of impervious surfaces, down storm drains, and into local waterways.

Learn more at
YourCleanWater.org

You are responsible for pollutants that leave your property.

Contaminated stormwater is a source of pollutants in many of our ponds, lakes, rivers, and streams.

Storm drains carry runoff from streets, urban centers, industrial sites, and open spaces into streams, creeks, and rivers.

Industrial operations are only one contributor to this problem, but they are known to be a source of heavy metals, oily wastes, and other substances.

Reducing or eliminating the exposure of industrial operations to rainfall and runoff is a proven way to reduce pollution in our surface waters.

General Cleaning

- When possible, use water based cleaning products.
- Dispose of wash water down a mop sink, floor drain, or sanitary sewer (sink or toilet); never a storm drain.
- Sweep shop floors, storage areas, and paved areas regularly. Do not wash down with a hose.



Spills

- Keep a spill kit ready for use and clean up spills right away.
- Always use dry methods to clean spills (sweeping) immediately.
- Report chemical spills to a local hazardous waste cleanup team.

Landscaping

- Whenever possible, use organic or slow-release nitrogen fertilizer with no or low phosphorus.
- MA law prohibits the use of phosphorus without a soil test.

Irrigation

- Avoid over-watering to prevent excess runoff.
- Make sure that sprinkler heads are pointed at the lawn.

Snow/Ice Removal

- Avoid over-salting and sweep up any spills or excess material.
- Store salt in a covered area.

Equipment Maintenance

- Inspect vehicles and equipment for leaks regularly.
- Perform maintenance indoors or offsite.

Material Storage

- Store all outdoor containers under cover.
- Store soil and mulch piles in contained areas where they cannot be washed into the storm drain system.

What is a Stormwater Pollution Prevention Plan?

A Stormwater Pollution Prevention Plan (SWPPP) describes how you are going to reduce or eliminate stormwater pollution from your industrial operations.

Federal stormwater regulations require many kinds of industrial facilities to take steps to prevent storm water pollution.

Based upon SIC codes and stormwater exposure, your facility may need to be covered under the Multi Sector General Permit (MSGP).

If so, you need to prepare a SWPPP that is part of a collection of Best Management Practices like the ones described in this brochure.

For more information on coverage under the Multi Sector General Permit, go to: www.epa.gov/npdes/stormwater-discharges-industrial-activities#msgp



Avoid Fines And Work Stoppages

This community takes stormwater management seriously and you should, too.

Protect your business, your clients, and your reputation by installing and maintaining industrial stormwater best management practices (BMPs) properly.

You'll not only avoid costly fines and work stoppages, you'll be protecting the waterways your community depends on, and earning a well deserved reputation.

Learn more at
YourCleanWater.org

